

CCS OpenWorld in Yokohama 2025

**A hub where technology meets ideas
to drive innovation in inspection**

Explore our advanced solutions to resolve
your problems in inspection.
CCS welcomes you to a special experience
with over 30 technology showcases that go
beyond satisfaction.

Date & Time

December 3 (Wed) - 5 (Fri), 2025, 9 am - 5 pm *Last entry: 4 pm

Venue

Nisseki Yokohama Hall (Nisseki Yokohama Bldg.)
1-1-8 Sakuragicho, Naka-ku, Yokohama-shi, Kanagawa, 231-0062, Japan
•6-minute walk from Sakuragichō Station
•7-minute walk from Minatomirai Station

Registration

Pre-registration is required.

Registration form: <https://www.ccs-grp.com/topics/detail/1707>



Organized by



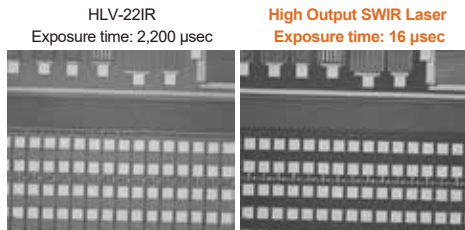
CCS Inc.

Headquarters (Kyoto, Japan)
TEL: +81-75-415-8284, FAX: +81-75-415-8316
E-mail: sales@ccs-inc.co.jp
<https://www.ccs-grp.com/>

Showcase Highlights

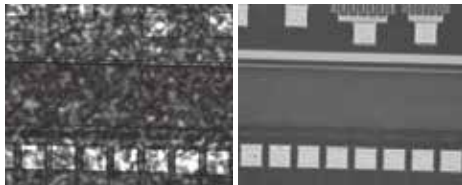
Ultra-High Output SWIR Laser Light Source (1130 nm/1675 nm)

Contributing to a wider range of applications and faster inspection speed than conventional SWIR lights



Imaging is possible with shorter exposure time

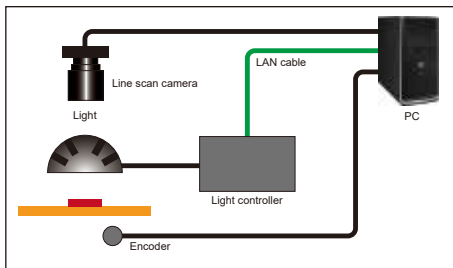
Without an original optical design With an original optical design



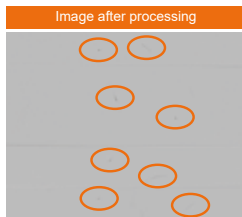
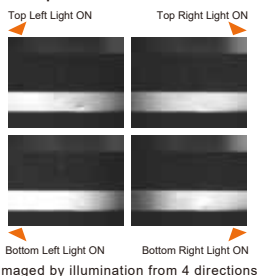
The original optical design has achieved less speckle noise, allowing to acquire clearer images

Line Scan Camera + Photometric Stereo

Highlight wrinkles and uneven surfaces in a single stage by imaging light effects from 4 directions and removing patterns on the workpiece



Inspection of blowholes and dents in metal plates



Capable of canceling surface patterns and acquiring images that emphasize blowholes and dents.

*Exhibit details are subject to change. Please contact our sales representatives for availability in each region.

... and more!

Other Nearby Events

International Technical Exhibition on Image Technology and Equipment 2025

The forefront exhibition of machine vision businesses that has contributed to development of industrial technologies centering around image processing.

Date: December 3 (Wed) - 5 (Fri)

Location: PACIFICO Yokohama (Yokohama, Kanagawa)

Website: <https://www.adcom-media.co.jp/iteeng/>

International Robot Exhibition 2025

State-of-the-art robots and robot-related technology including AI, ICT, and component technologies will all be on display throughout the event.

Date: December 3 (Wed) - 6 (Sat)

Location: Tokyo Big Sight (Tokyo)

Website: <https://irex.nikkan.co.jp/?lang=en>