

# Compact Controller CC-ST-1024

A Compact, Lightweight Controller for LED Light

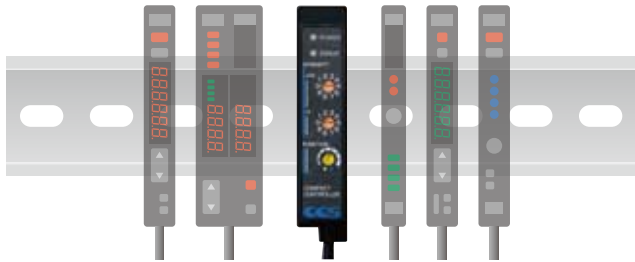


COMPACT CONTROLLER **CC-ST-1024**

# An LED Light Controller in the Size of a Sensor Amplifier

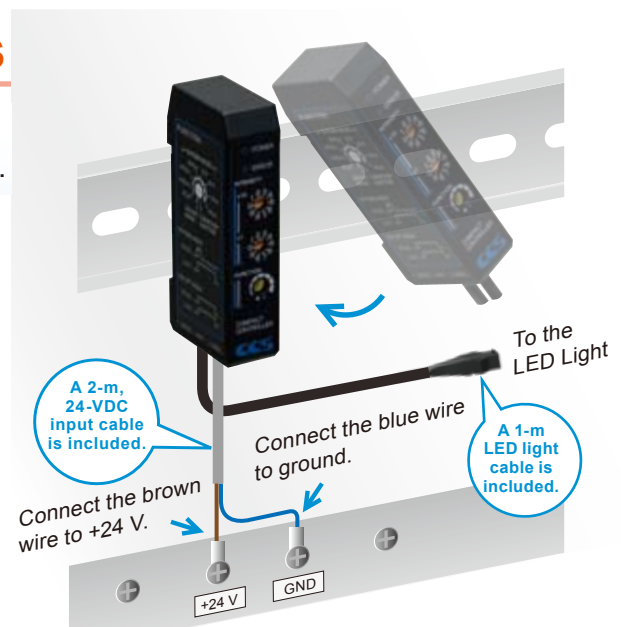
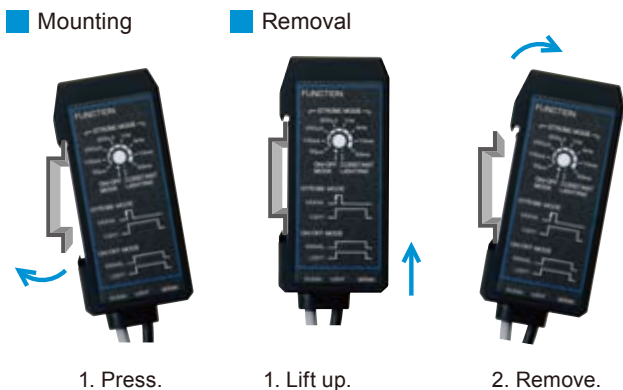
## CC-ST-1024 Features **1 Compact Design**

Smaller Than Ever Before:  
An LED Light Controller in the Size of a Sensor Amplifier



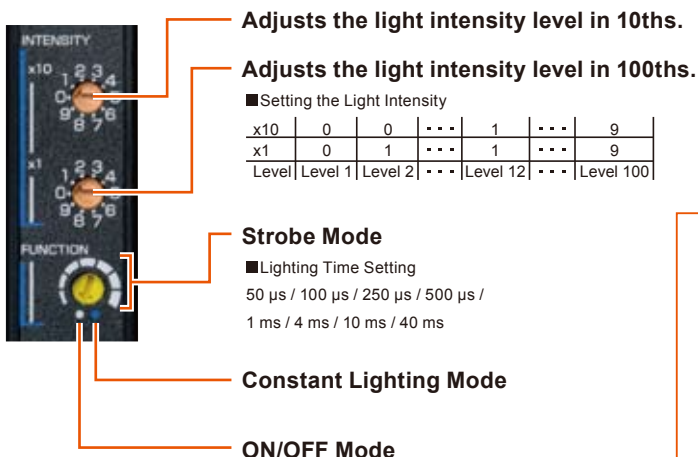
## CC-ST-1024 Features **2 Ideal for Onsite Environments**

With DIN rail mounting and 24-VDC input, this Controller is ideal for all types of onsite environments.



## CC-ST-1024 Features **3 Easy Operation**

Just set the three switches to easily control the LED Light.



**Control the LED Light with Three Lighting Modes**

■ Strobe Mode

In this mode, strobe lighting is synchronized with the trigger signal from the image processing device. The lighting time can be set.

■ Constant Lighting Mode

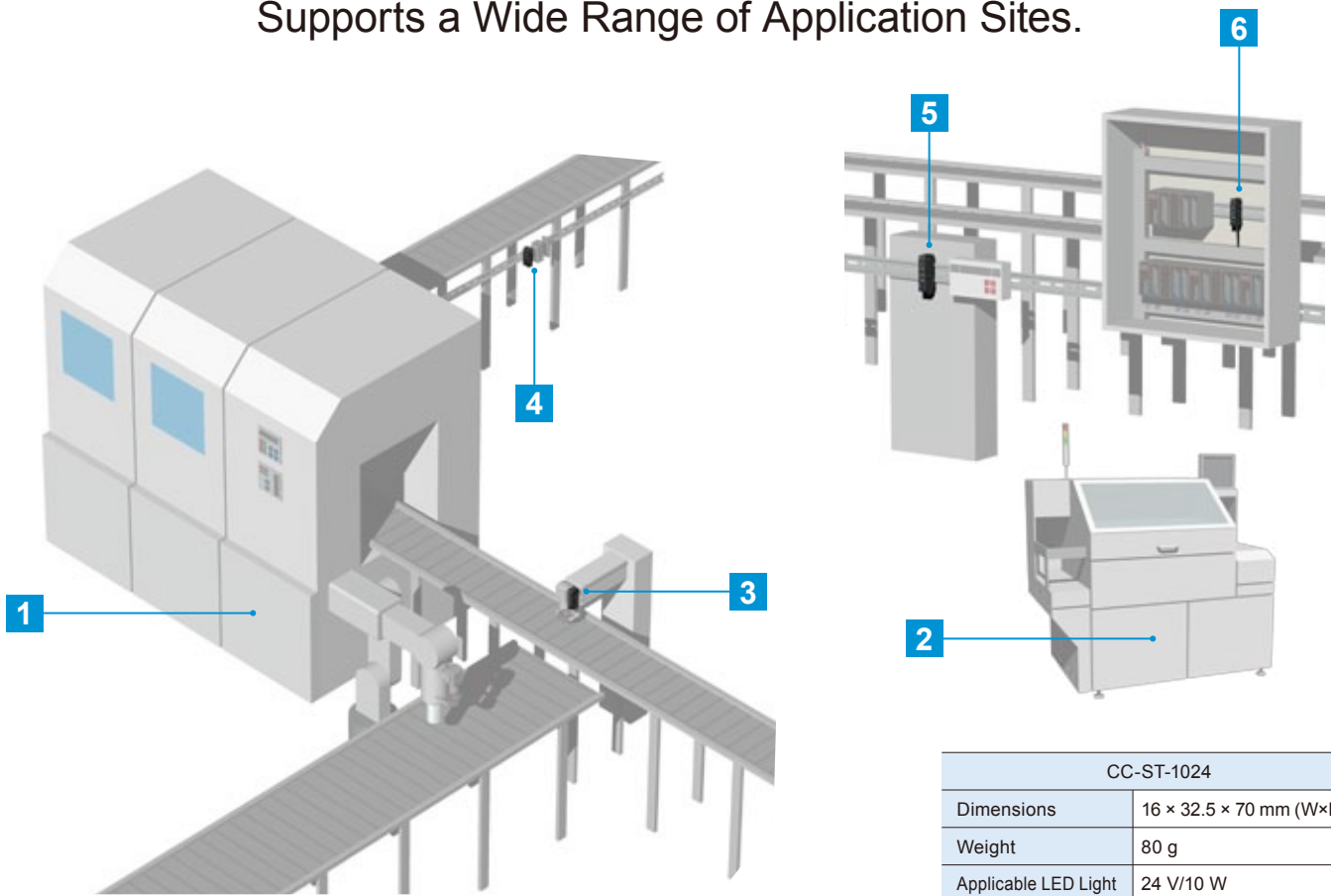
In this mode, the light is lit constantly. The intensity of the light can be set to any of 100 levels.

■ ON/OFF Mode

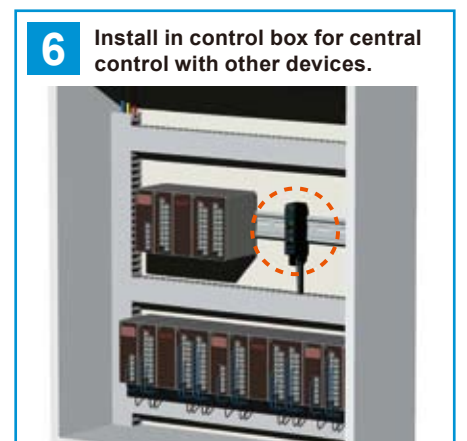
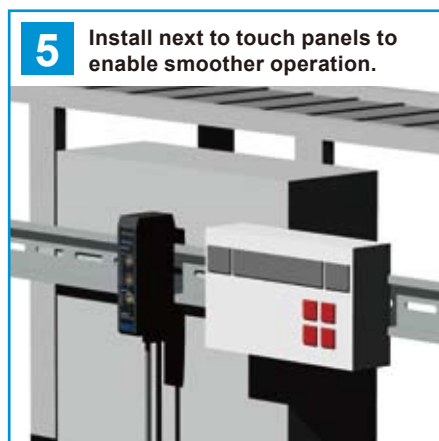
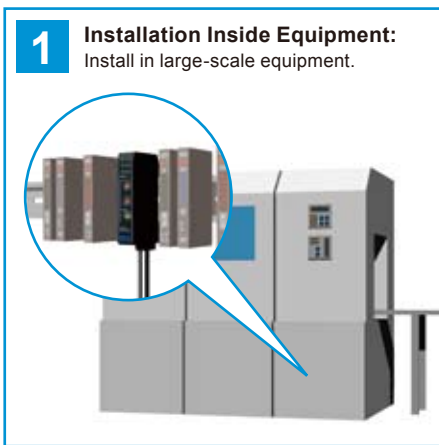
In this mode, lighting is synchronized with the high signal from the image processing device.

# Installation Examples

Supports a Wide Range of Application Sites.



CC-ST-1024	
Dimensions	16 × 32.5 × 70 mm (W×D×H)
Weight	80 g
Applicable LED Light	24 V/10 W

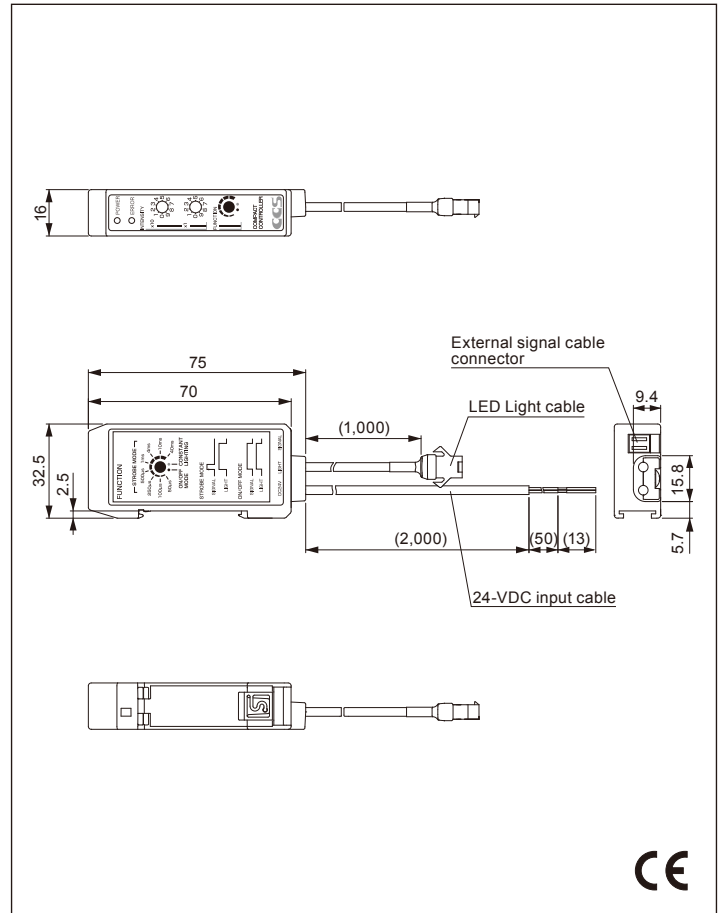


**Note:** These application examples are only conceptual. Actual application will depend on the installation environment.

## Specifications

Product name	Compact Controller for LED Light (Strobe Light Type)
Model	CC-ST-1024
Direct number	2000654
Drive method	Constant-voltage system
Light control method	PWM control, lighting time control
Applicable Light Units (rating)	24 V, 10 W
PWM frequency	100 KHz
Input overcurrent protection	A fuse cuts the circuit to protect the Controller from overcurrent.
Input voltage	24 VDC $\pm$ 10%
Power consumption (typ.)	11.0 W (10-W LED Light Unit at maximum light intensity)
Output voltage (rating)	24 VDC
Output current (rating)	0.42 A
Operating environment (indoors only)	Temperature: 0 to 40°C, Humidity: 20% to 85%RH (no condensation)
Storage environment	Temperature: -20 to 60°C, Humidity: 20% to 85%RH (no condensation)
Vibration resistance	Acceleration: 19.6 m/s <sup>2</sup> , frequency: 10 to 55 Hz, cycles: 3 minutes, for 1 hour each in X, Y, and Z directions
Impact resistance	Acceleration: 49.0 m/s <sup>2</sup> , operation time: 30 ms, number of times: 3 times each in 6 directions
Cooling method	Natural air cooling
CE marking	Conforms to EMC standard EN 61326, Class A.
Environmental regulations	RoHS compliant
Materials	ABS
Weight	80 g
Accessories	Flat-blade screwdriver

## Dimensional Diagram (mm)



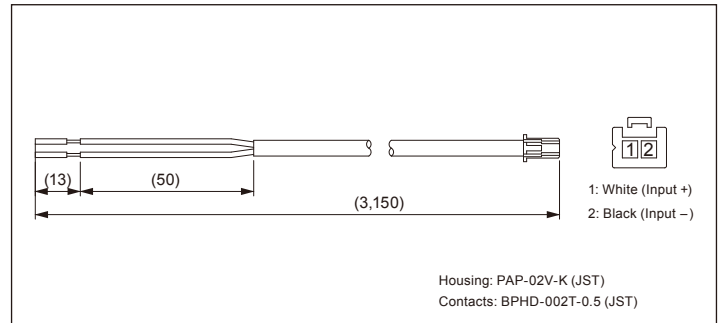
## Option: NFCB2-CC-3

- External Signal Cable (3 m)



This cable is for external signal. Use it to input external signal into the Controller.

## Dimensional Diagram (mm)



## Notes:

- Carefully read the product's instruction manual before use to ensure correct operation.
- Product specifications and design are subject to change without notice.

### Headquarters